

## CCR2 modulates inflammatory and metabolic effects of high-fat feeding

Stuart P. Weisberg, ... , Rudolph L. Leibel, Anthony W. Ferrante Jr.

*J Clin Invest.* 2006;116(5):1457-1457. <https://doi.org/10.1172/JCI24335C1>.

Addendum

Metabolism

Original citation: *J. Clin. Invest.* 116:115-124 (2006). doi:10.1172/JCI24335 Citation for this addendum: *J. Clin. Invest.* 116:1457 (2006). doi:10.1172/JCI24335C1 During revision of reference 11 (Brodmerkel, C.M., et al. 2005. Discovery and pharmacological characterization of a novel rodent active CCR2 antagonist, INCB3344. *J. Immunol.* 175:5370-5378.), the structure of INCB3344 was omitted. The structure of INCB3344 follows:

Find the latest version:

<https://jci.me/24335C1/pdf>





## Corrigendum

### A proinflammatory peptide from *Helicobacter pylori* activates monocytes to induce lymphocyte dysfunction and apoptosis

Åsa Betten, Johan Bylund, Thierry Christophe, François Boulay, Ana Romero, Kristoffer Hellstrand, and Claes Dahlgren

Original citation: *J. Clin. Invest.* **108**:1221–1228 (2001). doi:10.1172/JCI200113430.

Citation for this corrigendum: *J. Clin. Invest.* **116**:1457 (2006). doi:10.1172/JCI13430C1.

The name of one of the authors, Thierry Christophe, was misspelled. The corrected author list is shown above.

The authors regret this error.

## Addendum

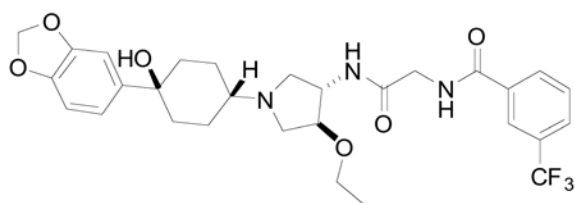
### CCR2 modulates inflammatory and metabolic effects of high-fat feeding

Stuart P. Weisberg, Deborah Hunter, Reid Huber, Jacob Lemieux, Sarah Slaymaker, Kris Vaddi, Israel Charo, Rudolph L. Leibel, and Anthony W. Ferrante, Jr.

Original citation: *J. Clin. Invest.* **116**:115–124 (2006). doi:10.1172/JCI24335.

Citation for this addendum: *J. Clin. Invest.* **116**:1457 (2006). doi:10.1172/JCI24335C1.

During revision of reference 11 (Brodmerkel, C.M., et al. 2005. Discovery and pharmacological characterization of a novel rodent active CCR2 antagonist, INCB3344. *J. Immunol.* **175**:5370–5378.), the structure of INCB3344 was omitted. The structure of INCB3344 follows:



INCB3344