

A proinflammatory peptide from *Helicobacter pylori* activates monocytes to induce lymphocyte dysfunction and apoptosis

usa Betten, ... , Kristoffer Hellstrand, Claes Dahlgren

J Clin Invest. 2006;116(5):1457-1457. <https://doi.org/10.1172/JCI13430C1>.

Corrigendum

Original citation: *J. Clin. Invest.*108:1221-1228 (2001). doi:10.1172/JCI200113430 Citation for this corrigendum: *J. Clin. Invest.*116:1457 (2006). doi:10.1172/JCI13430C1 The name of one of the authors, Thierry Christophe, was misspelled. The corrected author list is shown above. The authors regret this error.

Find the latest version:

<https://jci.me/13430C1/pdf>





Corrigendum

A proinflammatory peptide from *Helicobacter pylori* activates monocytes to induce lymphocyte dysfunction and apoptosis

Åsa Betten, Johan Bylund, Thierry Christophe, François Boulay, Ana Romero, Kristoffer Hellstrand, and Claes Dahlgren

Original citation: *J. Clin. Invest.* **108**:1221–1228 (2001). doi:10.1172/JCI200113430.

Citation for this corrigendum: *J. Clin. Invest.* **116**:1457 (2006). doi:10.1172/JCI13430C1.

The name of one of the authors, Thierry Christophe, was misspelled. The corrected author list is shown above.

The authors regret this error.

Addendum

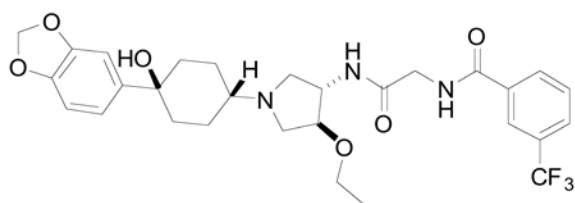
CCR2 modulates inflammatory and metabolic effects of high-fat feeding

Stuart P. Weisberg, Deborah Hunter, Reid Huber, Jacob Lemieux, Sarah Slaymaker, Kris Vaddi, Israel Charo, Rudolph L. Leibel, and Anthony W. Ferrante, Jr.

Original citation: *J. Clin. Invest.* **116**:115–124 (2006). doi:10.1172/JCI24335.

Citation for this addendum: *J. Clin. Invest.* **116**:1457 (2006). doi:10.1172/JCI24335C1.

During revision of reference 11 (Brodmerkel, C.M., et al. 2005. Discovery and pharmacological characterization of a novel rodent active CCR2 antagonist, INCB3344. *J. Immunol.* **175**:5370–5378.), the structure of INCB3344 was omitted. The structure of INCB3344 follows:



INCB3344